

A TOAST TO HOPE

A night of celebration and hope!

May 10, 2022

6:00-9:00pm

Mayfair Farms

481 Eagle Rock Avenue, West Orange, NJ

Honoring
Frank McGehee
and
Valley National Bank



**family
connections**

WHERE HOPE MEETS POSSIBILITY

CONTENTS

3 WELCOME

4 PROGRAM

5 RAFFLE

6 HONOREES

7 SPONSORS

8 PROGRAM HIGHLIGHTS

25 ABOUT US

26 GET IN TOUCH



WELCOME

Welcome to Family Connections' **A TOAST TO HOPE!** We are so **delighted** you're here and so **grateful** for your support.

Our hearty congratulations to tonight's honorees, Frank McGehee, recipient of the Roger Manshel Lifetime Achievement Award, and Valley National Bank, recipient of the Champion of the People Award. We are deeply grateful for their good work and commitment to Family Connections and our community. Thanks just as deeply to our sponsors for their leadership support of **A TOAST TO HOPE**. Without you, this event wouldn't be happening.

The past two years of the Pandemic have sharpened public awareness of the racial, economic, and gender disparities in our country. Every day, we at Family Connections witness how these disparities burden our already vulnerable clients. Children and families facing not only mental health and substance use challenges, but hunger and homelessness. Seeing this, we knew we had to take action to continue to be the place **where hope meets possibility** for our clients. Family Connections began supplementing our counseling services with increased delivery of food, clothing, and housing.

Our clients are ordinary people facing extraordinary challenges. And the great, humbling gift of working at Family Connections is witnessing their breathtaking **courage**, as they keep marching forward and upward.

So tonight, we want to share with you and celebrate just a few examples of that courage. We also want to share with you examples of how our work has been enhanced by the inspiration, bravery, wisdom, and tremendous hearts of staff, board, and the community. We want you to witness how your support – **tonight and always** – delivers essential services and supplies to those who need them most.

On behalf of Family Connections' Board Members and staff and, most importantly, the individuals and families we serve, we thank you for your presence and support.

Have a great night!



Jody Lipsky
President, Board of Trustees



Jacques Hryshko, LPC
Chief Executive Officer



PROGRAM



**family
connections**

TONIGHT'S PROGRAM

6:00-6:45

Cocktail Reception

7:00-7:45

Welcome and Presentations

7:45-8:30

Dinner and Desserts

8:30

Raffle Winner Announced

Use the hashtag **#AToastToHope** and tag **@familyconnectionsny** to share your photos and videos of tonight's event!



TONIGHT'S RAFFLE ITEM

Donated by: Cult Wines

Cult Wines is one of the world's leading fine wine investment companies with a global client base and assets under management exceeding \$320 million. Headquartered in London, the company was founded in 2007 by Philip and Tom Gearing and has since opened offices in Singapore, Hong Kong, Shanghai, Toronto, and New York.

Combining a love of fine wine and market-leading industry knowledge with the latest technology, Cult Wines analyses and unlocks the market for investors around the world. Long-term wine collectors and novice investors alike choose Cult Wines not only for the extensive financial expertise, but for the shared passion for fine wine and access to like-minded wine lovers, exclusive tastings and engaging trips. The company tailors each investor's portfolio to their specific risk appetite, investment level and target returns. Cult Wines' rigorous due diligence and investor protection measures help to ensure that only the highest-quality assets are included in its investors' portfolios.

One wine tasting for 8 people at your house or in Cult Wines' beautiful NYC office. The tasting will include 4-6 high end wines chosen together with Cult Wines to suit everyone's' taste.

Estimated Value of Item: \$1,500



HONOREES



Roger Manshel Lifetime Achievement Award



Frank McGehee is a member of the Township Committee for Maplewood, New Jersey. In his role, Mr. McGehee is focused on making Maplewood a safe, welcoming, inclusive, thriving and sustainable community for its 25,000 residents and business owners. Previously, Mr. McGehee has served as both Mayor and Deputy Mayor. He was elected to Maplewood's Township Committee in November 2016, and re-elected in November 2019.

Professionally, Mr. McGehee is a senior analytical marketer with more than 20 years of management and leadership experience at high profile start-ups and Fortune 500 companies including DraftKings, TIDAL, Harrah's Entertainment and Bank of America.

Mr. McGehee earned his Bachelor of Business Administration in Accounting from the University of Notre Dame. As a Consortium Fellow, McGehee earned a full academic scholarship at the University of Wisconsin – Madison Graduate School of Business, where he graduated with a Master of Business Administration in Brand Management.

Champion of the People Award



As the principal subsidiary of Valley National Bancorp, **Valley National Bank** is a regional bank with approximately \$41 billion in assets. Valley is committed to giving people and businesses the power to succeed. Valley operates many convenient branch locations across New Jersey, New York, Florida and Alabama, and is committed to providing the most convenient service, the latest innovations and an experienced and knowledgeable team dedicated to meeting customer needs. Helping communities grow and prosper is the heart of Valley's corporate citizenship philosophy.



OUR GENEROUS SPONSORS

Gold Sponsors



Silver Sponsors



Bronze Sponsors



Jacques Hryshko

The Manshel Family

M&T Bank

Morgan Stanley

THE MILLER CONTURSO GROUP
AT MORGAN STANLEY

 Mutual of America
Financial Group™

Retirement Services • Investments

Benefactor



THANK YOU



PROGRAM HIGHLIGHTS

Family Connections is now a **Certified Community Behavioral Health Center**. This is a gamechanger for our clients, as the agency now becomes a one-stop-shop for them in terms of services and referrals.



In 2020, Family Connections joined the social justice movement not just externally, but also internally. The agency created listening circles, book clubs and a **cultural competence plan** for the entire organization.



Last summer, **Jacques Whitley** did what some would view as impossible. At 15 years old, Jacques biked across the United States, all while raising over **\$13,000** for Family Connections.





GUIDANCE. TRUST. PASSION.



For more than 95 years, Henry O. Baker Insurance Group has been the first choice for insurance in Morris County and Northern New Jersey.

The professional, experienced insurance agents at Henry O. Baker take pride in being a traditional, community leader in business insurance companies. Our independent roots allow us to provide quality insurance solutions of all types and sizes, business and personal. If you are looking for the most competitive rates from the leading insurance carriers, look no further than the trusted professionals at Henry O. Baker Insurance Group for all your corporate, personal, and business insurance needs.

7 South Warren Street | Dover, NJ 07801 | (973) 366-0500



A+
RATING
As of
3/20/2022



BUILDING THRIVING
COMMUNITIES, INSPIRED BY
OUR **PARTNER IN IMPACT:**
FAMILY CONNECTIONS



IMPACT
INITIATIVE

See how we're helping our communities thrive
at capitalone.com/about

A TOAST OF HOPE

Valley Bank is grateful to join in this celebration of hope and possibilities.

With thanks to **FAMILY CONNECTIONS** and all who inspire and work for our communities.





WE ARE PROUD TO SUPPORT

Family Connections A Toast To Hope

Bloomfield Branch

347 Broad Street • Bloomfield, NJ 07003

Samantha Selody, Branch Manager

973.743.2576 • investorsbank.com



InvestorsBank[®]

Member FDIC  Equal Housing Lender
Investors Bank is a division of Citizens Bank, N.A.

Congratulations to
Frank McGehee
and
Valley National Bank
on Their Well-Deserved Awards



With HOPE, anything is possible.

Hope Therapeutic Services is a mental health group practice providing individual, couples, family and group therapy located in West Orange NJ.

www.hopetsllc.com

Thank You
to Our **BOARD OF TRUSTEES** *and* **STAFF**

Congratulations
to Our Honorees

FRANK MCGEHEE
and
VALLEY NATIONAL BANK

From Family Connections' CEO
Jacques Hryshko



family
connections

WHERE HOPE MEETS POSSIBILITY



Getting involved is important.

At M&T Bank, we know how important it is to support those organizations that make life better in our communities. That's why we offer our time and resources, and encourage others to do the same. [Learn more at **mtb.com/community**](https://mtb.com/community).

M&T Bank is proud to support Family Connections of New Jersey..

M&T Bank
Understanding what's important®



Equal Housing Lender. ©2020 M&T Bank. Member FDIC.

Support provided by The M&T Charitable Foundation and its corporate sponsor, M&T Bank.

**The Manshel Family
Congratulates**

FRANK MCGEHEE

**for Being Honored With the
Roger Manshel
Lifetime Achievement Award
2022**

Morgan Stanley

Proud Supporter

The Miller Conturso Group at Morgan Stanley is proud to support Family Connections.

Nicholas Conturso, CFP®, ChFC®

Executive Financial Services Director
Family Wealth Advisor
Portfolio Management Director
Senior Vice President–Wealth Management
Financial Advisor
NMLS #1278806

Matthew M. Miller, CFP®, ChFC®

Certified Private Wealth Advisor®
Executive Financial Services Director
Senior Portfolio Manager
Senior Vice President–Wealth Management
Financial Advisor
NMLS #1278660

10 Madison Avenue, 1st Floor
Morristown, NJ 07962
973-993-5255
advisor.morganstanley.com/the-miller-conturso-group

Certified Financial Planner Board of Standards Inc. owns the certification marks CFP®, CERTIFIED FINANCIAL PLANNER™ and federally registered CFP (with plaque design) in the US.

© 2022 Morgan Stanley Smith Barney LLC. Member SIPC.

SUP021 CRC 3942001 01/22 CS 258450_1997812 12/21



**We Feel Good
Helping Those
Who Do Good**



**We are proud to support
Family Connections
A Toast To Hope**



SOBELCO

SobelCoLLC.com

Livingston, NJ | Woodcliff, NJ | Paoli, PA

Audit & Accounting | Tax | Advisory | Forensic and Valuation Services

Here's hoping for
many more silver linings!

From your friends at



Best Wishes to Family Connections on their Spring Event

A Toast to Hope Gala

Honoring

Frank McGehee

Valley National Bank



ELECTRICAL CONTRACTORS

144 Main Street, West Orange N.J 07052 Tel: 973/325-3626

Lic No: 16744

[w o r d s]

B O O K S T O R E

and

The Zimiles Family

THANK

MAYOR FRANK

for his dedicated and
inspirational leadership
during a time of crisis

179 Maplewood Avenue | Maplewood, NJ 07040 | 973.763.9500

wordsbookstore.com

Congratulations **Frank on your well-deserved recognition! We couldn't be more proud. You are a true leader and champion of the community.**

With lots of love,

*Dad & Yvette, Matt & Kara, Mike & Andrea,
Connie & Anthony, Aunt Sandy, Uncle Mike,
Papa Gege & Yanick, Tamie & Jack,
Jo-Ann & Dereck, Josephine, Ian, Max, Mauricio,
Lorenzo, Vida, Madison, Marie, Sunshine and all of
your friends throughout MAPSO and beyond!*

Congratulations to

Frank McGehee

**who truly deserves to be acknowledged
for his dedication to our community.**

**This is a well deserved honor for a truly
committed leader.**

- Kelly Quirk and Martin Ceperley

HCC H A M M O N D
C O N T R A C T I N G
C O M P A N Y, I N C.

INDUSTRIAL HEATING • VENTILATING
AIR CONDITIONING • PLUMBING

SINCE 1916 / NJSPL No. 8075

Tel 908.534.1110 / Fax 908.534.1180

291 Route 22 East Suite 24, Lebanon, NJ 08833





JVS congratulates Family Connections and Valley Bank on the hard work and commitment they have made to the community. JVS is proud to partner with you for the success of all.

n a s t a s i
a r c h i t e c t s

Thank you for all the great work you do
Family Connections
from your friends at nastasi architects.



**The Lembrich/Carter Family congratulates
Frank and the entire **McGehee Family**
on tonight's honor!**

With love from Greg, Alex, and Caroline

ABOUT US

Family Connections is a leading New Jersey non-profit with over 30 different programs to support children, adults, and families. Far too many people in our communities face serious challenges—from trauma and mental illness to substance use, domestic violence, and child abuse. Family Connections is here to make sure no one has to face these challenges alone. Across Northern New Jersey, we deliver counseling, social and emotional skills-building, prevention and training initiatives, programs to strengthen family bonding and reunify families, and more.

Since 1879, Family Connections has proven that communities thrive when everyone is invested in each other's wellbeing.

Our Vision: We see a world where no one faces life's challenges alone—where we all have the opportunities, connections, and resources we need to thrive.

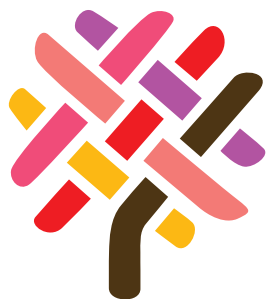
Our Mission: Growth happens here every day. With our counseling, skills-building, training and prevention services, people take control of their own healing and foster connections that make our entire community stronger, safer, and healthier.

Our Core Values: We strive every day to be: Inclusive | Strengths-based | Relationship-driven | Outcome-oriented | Collaborative

Connect with us to build a stronger, safer, and healthier New Jersey.



GET IN TOUCH



**family
connections**

**Connect with us to build a stronger,
safer, and healthier New Jersey.**

For anyone seeking services, please call our Main Number and Directory at:
973-675-3817

For more information on specific services, as well as employment and volunteer opportunities, visit our website at: **familyconnectionsnj.org**

Administration

7 Glenwood Avenue, Suite 101, East Orange, NJ 07017

Locations

395 South Center Street, Orange, NJ 07050

7 Glenwood Avenue, East Orange, NJ 07017

122 Irvington Avenue, South Orange, NJ 07079

48 13th Avenue, Paterson, NJ 07504

School-Based Programs

- **The Space** at Orange High School
- **The Zone** at Orange Preparatory Academy
- **The Loft** at Columbia High School
- **The Hub** at Maplewood Middle School
- **The Den** at Bloomfield High School

In-Home, In-Community, and Training Services

Operating throughout Bergen, Essex, Hudson, Hunterdon, Middlesex, Morris, Passaic, Somerset, Sussex, Union, and Warren Counties